

## 20. FULL FLOW® COMPRESSION

4 Bar

PRODUCT CODE

DESCRIPTION

EXCL VAT

INCL VAT

KEY TO COLOUR CODING:



Yellow Ring = 13mm



Blue Ring = 15mm



Green Ring = 20mm



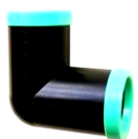
Black Ring = 25mm

### EQUAL COUPLINGS



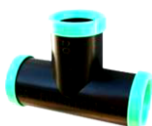
R52152C12	FULL FLOW® 12MM COUPLING (FF1001)	10.43	12.00
R52152C15	FULL FLOW® 15MM COUPLING (FF1002)	12.35	14.20
R52152C20	FULL FLOW® 20MM COUPLING (FF1003)	14.17	16.30
R52152C25	FULL FLOW® 25MM COUPLING (FF1040)	16.00	18.40

### EQUAL ELBOWS



R52152E12	FULL FLOW® 12MM ELBOW (FF1012)	11.65	13.40
R52152E15	FULL FLOW® 15MM ELBOW (FF1013)	14.26	16.40
R52152E20	FULL FLOW® 20MM ELBOW (FF1014)	16.17	18.60
R52152E25	FULL FLOW® 25MM ELBOW (FF1060)	19.04	21.90

### EQUAL TEES



R52152T12	FULL FLOW® 12MM TEE (FF1006)	13.74	15.80
R52152T15	FULL FLOW® 15MM TEE (FF1007)	16.78	19.30
R52152T20	FULL FLOW® 20MM TEE (FF1008)	19.65	22.60
R52152T25	FULL FLOW® 25MM TEE (FF1050)	23.74	27.30

### END CAPS



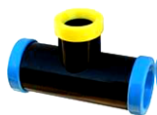
R52152EC12	FULL FLOW® 12MM END CAP (FF1018)	12.26	14.10
R52152EC15	FULL FLOW® 15MM END CAP (FF1019)	13.57	15.60
R52152EC20	FULL FLOW® 20MM END CAP (FF1020)	15.74	18.10
R52152EC25	FULL FLOW® 25MM END CAP (FF1030)	18.26	21.00

### REDUCING COUPLINGS



R52152RC1512	FULL FLOW® 15MM X 12MM RED.COUPLING (FF1004)	12.26	14.10
R52152RC2012	FULL FLOW® 20MM X 13MM RED.COUPLING (FF1120)	16.78	19.30
R52152RC2015	FULL FLOW® 20MM X 15MM RED.COUPLING (FF1005)	16.87	19.40
R52152RC2515	FULL FLOW® 25MM X 15MM RED.COUPLING (FF1110)	18.52	21.30
R52152RC2520	FULL FLOW® 25MM X 20MM RED.COUPLING (FF1045)	19.65	22.60

### REDUCING TEES



R52152RT1512	FULL FLOW® 15MM X 13MM RED.TEE (FF1028)	18.26	21.00
R52152RT2012	FULL FLOW® 20MM X 13MM RED.TEE (FF1024)	19.65	22.60
R52152RT2015	FULL FLOW® 20MM X 15MM RED.TEE (FF1025)	19.83	22.80
R52152RT2515	FULL FLOW® 25MM X 15MM RED.TEE (FF1070)	23.74	27.30
R52152RT2520	FULL FLOW® 25MM X 20MM RED.TEE (FF1105)	25.39	29.20

### REDUCING ELBOWS



R52152RE2015	FULL FLOW® 20MM X 15MM RED.ELBOW (FF1256)	14.96	17.20
--------------	---	-------	-------

### MALE ADAPTORS



R52152MA1515	FULL FLOW® 15MM X 1/2" MALE ADAPTOR (FF1021)	12.26	14.10
R52152MA1520	FULL FLOW® 15MM X 3/4" MALE ADAPTOR (FF1032)	13.04	15.00
R52152MA2015	FULL FLOW® 20MM X 1/2" MALE ADAPTOR (FF1033)	18.43	21.20
R52152MA2020	FULL FLOW® 20MM X 3/4" MALE ADAPTOR (FF1022)	18.61	21.40
R52152MA2025	FULL FLOW® 20MM X 1" MALE ADAPTOR (FF1034)	19.57	22.50
R52152MA2515	FULL FLOW® 25MM X 1/2" MALE ADAPTOR (FF1036)	20.00	23.00
R52152MA2520	FULL FLOW® 25MM X 3/4" MALE ADAPTOR (FF1037)	20.26	23.30
R52152MA2525	FULL FLOW® 25MM X 1" MALE ADAPTOR (FF1035)	21.13	24.30

## 20. FULL FLOW® COMPRESSION

4 Bar

PRODUCT CODE	DESCRIPTION	EXCL VAT	INCL VAT
--------------	-------------	----------	----------

### MALE ELBOWS



R52152ME1215	FULL FLOW® 13MM X 1/2" MALE ELBOW (FF1190)	21.91	25.20
R52152ME1515	FULL FLOW® 15MM X 1/2" MALE ELBOW (FF1015)	22.52	25.90
R52152ME1520	FULL FLOW® 15MM X 3/4" MALE ELBOW (FF1192)	23.13	26.60
R52152ME2015	FULL FLOW® 20MM X 1/2" MALE ELBOW (FF1017)	23.74	27.30
R52152ME2020	FULL FLOW® 20MM X 3/4" MALE ELBOW (FF1016)	24.61	28.30
R52152ME2025	FULL FLOW® 20MM X 1" MALE ELBOW (FF1092)	26.35	30.30
R52152ME2515	FULL FLOW® 25MM X 1/2" MALE ELBOW (FF1096)	26.96	31.00
R52152ME2520	FULL FLOW® 25MM X 3/4" MALE ELBOW (FF1100)	29.30	33.70
R52152ME2525	FULL FLOW® 25MM X 1" MALE ELBOW (FF1350)	30.87	35.50

### FEMALE ELBOWS



R52152FE1515	FULL FLOW® 15MM X 1/2" FEM ELBOW (FF2220)	30.09	34.60
R52152FE2015	FULL FLOW® 20MM X 1/2" FEM ELBOW (FF2240)	31.65	36.40
R52152FE2020	FULL FLOW® 20MM X 3/4" FEM ELBOW (FF2250)	33.91	39.00
R52152FE2515	FULL FLOW® 25MM X 1/2" FEM ELBOW (FF2260)	35.22	40.50
R52152FE2520	FULL FLOW® 25MM X 3/4" FEM ELBOW (FF2270)	37.13	42.70

### MALE TEES



R52152MT1215	FULL FLOW® 13MM X 1/2" MALE TEE (FF1180)	21.91	25.20
R52152MT1515	FULL FLOW® 15MM X 1/2" MALE TEE (FF1009)	22.52	25.90
R52152MT1520	FULL FLOW® 15MM X 3/4" MALE TEE (FF1182)	24.61	28.30
R52152MT2015	FULL FLOW® 20MM X 1/2" MALE TEE (FF1011)	26.52	30.50
R52152MT2020	FULL FLOW® 20MM X 3/4" MALE TEE (FF1010)	26.96	31.00
R52152MT2515	FULL FLOW® 25MM X 1/2" MALE TEE (FF1080)	30.35	34.90
R52152MT2520	FULL FLOW® 25MM X 3/4" MALE TEE (FF1089)	30.87	35.50
R52152MT2525	FULL FLOW® 25MM X 1" MALE TEE (FF1300)	37.22	42.80

### FEMALE TEES



R52152FT2015	FULL FLOW® 20MM X 1/2" FEM TEE (FF2130)	34.52	39.70
R52152FT2020	FULL FLOW® 20MM X 3/4" FEM TEE (FF2140)	36.26	41.70
R52152FT2515	FULL FLOW® 25MM X 1/2" FEM TEE (FF2150)	38.35	44.10
R52152FT2520	FULL FLOW® 25MM X 3/4" FEM TEE (FF2160)	40.87	47.00

### FLOW CONTROL



R52152FC12	FULL FLOW® 12MM FLOW CONTROL (FF1140)	46.26	53.20
R52152FC15	FULL FLOW® 15MM FLOW CONTROL (FF1150)	48.26	55.50
R52152FC20	FULL FLOW® 20MM FLOW CONTROL (FF1160)	54.78	63.00

### SOCKETS



R64152SS15	EMJAY® 15MM (1/2") SHORT SOCKET (BK50)	8.78	10.10
------------	--	------	-------

### SHRUB ADAPTORS



R52152PA200	MICROJET SHRUB ADAPTOR 1/2" BSP X 2BA (PA200)	10.43	12.00
R52152PA400	FULL FLOW® 15MM UNIVERSAL SHRUB ADAPTOR (PA400)	10.43	12.00






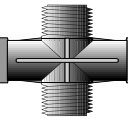
### SNAP ON® TAP CONNECTORS



R52152TC15	SNAP ON® 15MM (1/2") TAP CONNECTOR (SB110)	21.57	24.80
R52152TC20	SNAP ON® 20MM (3/4") TAP CONNECTOR (SB130)	22.35	25.70
R52152TC25	SNAP ON® 25MM (7/8") TAP CONNECTOR (SB140)	30.78	

## 20. FULL FLOW® COMPRESSION

4 Bar

PRODUCT CODE	DESCRIPTION	EXCL VAT	INCL VAT	
<b>SNAP ON® FULL FLOW CONNECTORS</b>				
	R52152QCC12	SNAP ON® 12MM CONNECTOR (SB350)	51.39	59.10
	R52152QCC15	SNAP ON® 15MM CONNECTOR (SB360)	55.04	63.30
	R52152QCC20	SNAP ON® 20MM CONNECTOR (SB370)	56.43	64.90
<b>SNAP ON® EMJAY HOSE CONNECTORS</b>				
	R52152HC15	SNAP ON® EMJAY 15MM HOSE CONNECTOR (SB224)	46.35	53.30
	R52152HC20	SNAP ON® EMJAY 20MM HOSE CONNECTOR (SB225)	46.35	53.30
<b>SNAP ON® POLY PIPE CONNECTORS</b>				
	R52152PPC13	SNAP ON® 13MM POLYPIPE CONN COUPLING (SB310)	23.13	26.60
	R52152PPC15	SNAP ON® 15MM POLYPIPE CONN COUPLING (SB320)	24.35	28.00
	R52152PPC20	SNAP ON® 20MM POLYPIPE CONN COUPLING (SB330)	25.48	29.30
<b>SHUT OFF VALVES FULL FLOW</b>				
	R52152SOV12	FULL FLOW® SHUT-OFF VALVE 12MM X 3/4"(VF100)	71.83	82.60
	R52152SOV15	FULL FLOW® SHUT-OFF VALVE 15MM X 3/4"(VF110)	71.83	82.60
	R52152SOV20	FULL FLOW® SHUT-OFF VALVE 20MM X 3/4"(VF120)	71.83	82.60
<b>SHUT OFF VALVES INSERT &amp; THREADED</b>				
	R52152SOV1220	EMJAY® SHUT OFF VALVE 13MM X 3/4" (VB100)	71.83	82.60
	R52152SOV1520	EMJAY® SHUT OFF VALVE 15MM X 3/4" (VB110)	71.83	82.60
	R52152SOV2020	EMJAY® SHUT OFF VALVE 20MM X 3/4" (VB120)	71.83	82.60
<b>MANIFOLD CONNECTORS</b>				
	R52152MANCR25	EMJAY® 25MM MANIFOLD CROSS (MM110)	53.30	61.30
	R52152MANE25	EMJAY® 25MM MANIFOLD ELBOW (MM120)	45.22	52.00
	R52152MANIN20	EMJAY® 25MM MANIFOLD INLET (MM130)	32.35	37.20
	R52152MANEC25	EMJAY® 25MM MANIFOLD END CAP (MM140)	27.48	31.60
	R52152MANC25	EMJAY® 25MM MANIFOLD COUPLING (MM150)	16.26	18.70
	R52152MANCLIP	EMJAY® MANIFOLD PLAIN CLIP (MM160)	11.39	13.10

### FULL FLOW® FITTING VS REGULAR BARBED FITTING

