

- 01 - - 02 - - 03 - - 04 - - 05 - - 06 - - 07 - - 08 -

Pumps

- Gasoline Water Pump
- Gasoline Sewage Pump
- Gasoline Cast Iron Centrifugal Pump
- Diesel Water Pump
- Gasoline Trash Pump
- Horizontal Engines





Application

- To transfer clean water with liquid temperature between 0°C and 40°C
- Application in water supply and drainage for factories, mines, municipal facilities as well as field irrigation, etc.
- Suitable for longer distance and greater height water transfer

Features

- New unique design with ergonomic feature
- Portable and compact pump frame
- High quality motor with excellent performance and long service life
- Impeller designed with high efficient hydraulic system
- Low fuel consumption
- LEO engine as default, BS/Honda engine is optional

Pump

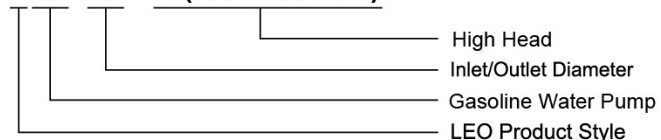
- Anti-rust cast iron diffuser
- Max.Suction: 8 m , Suck 5 m needs 120 s
- Inlet/outlet: 50 mm/2 x 38 mm+1 x 50 mm
38 mm/1 x 38 mm+2 x 25 mm

Engine

- Single cylinder, 4-stroke, Air-cooled
- Max.power: 6.5 HP
- Rated speed: 3600 rpm
- Reliable engine equipped with low engine oil shut off system

Identification Codes

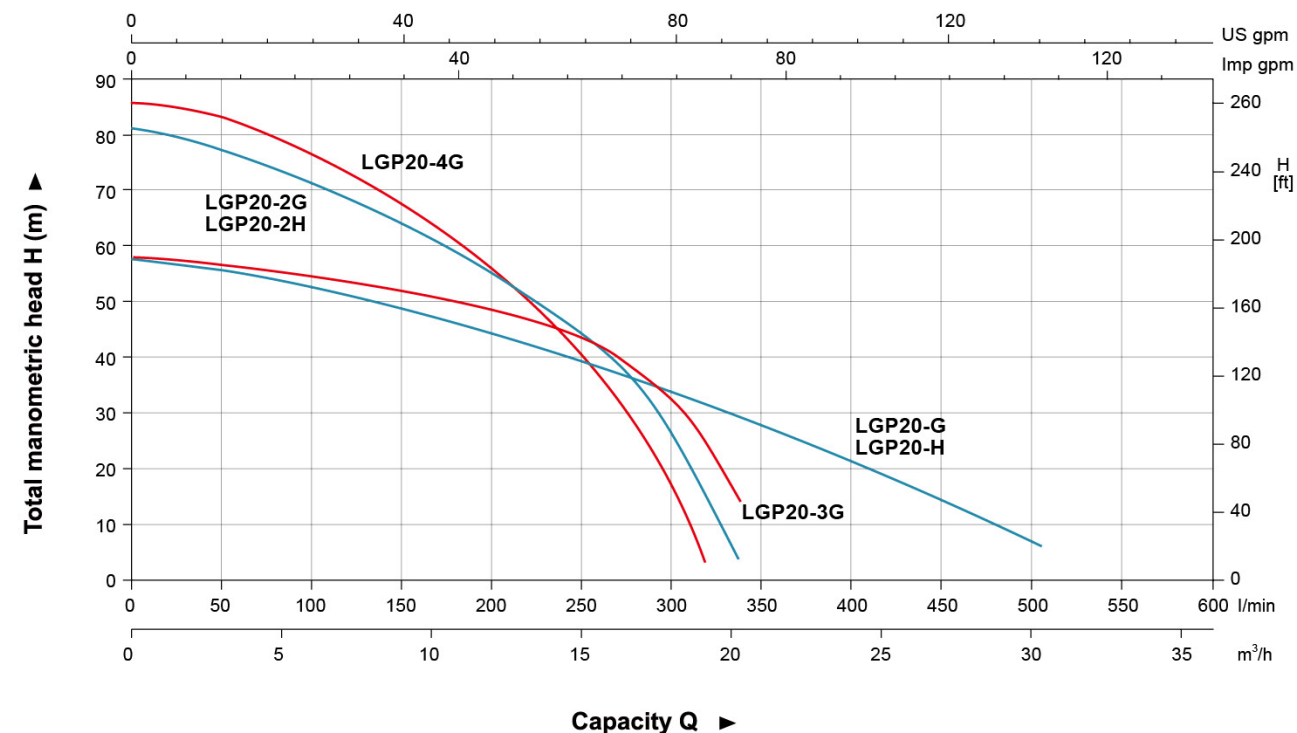
LGP 20 - H(G.2G.3G.4G)



Technical Data

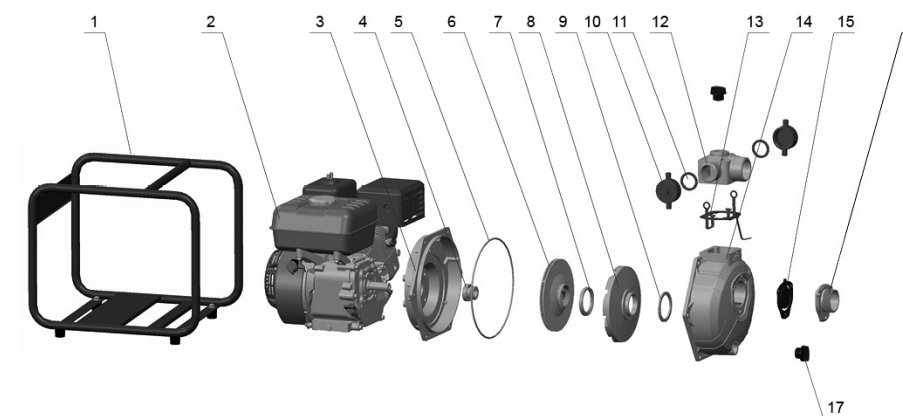
Model	Power HP	Fuel tank L	Engine Oil L	Displacement cc	Engine	Q (m³/h)								
						0	5	10	15	20	25	30		
LGP20-H	6.5	2.8	0.55	196	G200	58	51	45	38.5	29	19	6		
LGP20-2H	6.5	2.8	0.55	196	G200	81	72.5	60	45	5	-	-		
LGP20-G	6.5	2.8	0.58	196	GX200	59	54	46.8	39	30	20	5.4		
LGP20-2G	6.5	2.8	0.58	196	GX200	84	77.7	61.6	38.3	4.9	-	-		
LGP20-3G	6.5	3.1	0.6	208	XR950	59	55.2	50	42.8	15	-	-		
LGP20-4G	6.5	3.1	0.6	208	XR950	86	77.6	60.7	40	4.4	-	-		

Hydraulic Performance Curves



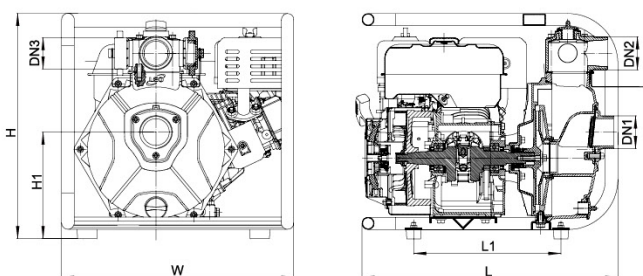
Materials Table

No.	Part	Material
1	Frame	Steel
2	Engine	
3	Bracket	Aluminum
4	Mechanical seal	Carbon/Ceramic
5	O-ring	NBR
6	Impeller	Aluminum
7	Seal ring	NBR
8	Diffuser	HT200
9	Seal ring	NBR
10	Pipe blanking cap	PP
11	Seal ring	NBR
12	Outlet	Aluminum
13	Gasket	NBR
14	Pump body	Aluminum
15	Non-return valve	NBR
16	Inlet	Aluminum
17	Filling plug	PA6



Package Information

Model	GW (Kgs)	L (mm)	W (mm)	H (mm)	Quantity (PCS/20 TEU)
LGP20-H	23.22	470	412	432	305
LGP20-2H	23.24	470	412	432	305
LGP20-G	25.5	545	435	465	196
LGP20-2G	27	545	435	465	196
LGP20-3G	27.2	545	435	465	196
LGP20-4G	28.2	545	435	465	196



Dimension

Model	DN1	DN2	2×DN3	L (mm)	W (mm)	H (mm)	H1 (mm)
LGP20-H	2"	2"	1.5"	463	398	406	200
LGP20-2H	2"	2"	1.5"	463	398	406	200
LGP20-G	2"	2"	1.5"	530	420	425	192.2
LGP20-2G	2"	2"	1.5"	530	420	425	192.2
LGP20-3G	1.5"	1.5"	1"	530	420	425	190
LGP20-4G	1.5"	1.5"	1"	530	420	425	190



Application

- To transfer clean water with liquid temperature between 0°C and 40°C
- Application in water supply and drainage for factories, mines, municipal facilities as well as field irrigation, etc.

Features

- Strengthened cast-iron pump body ensures more durable and reliable service
- Impeller designed with high efficient hydraulic system
- High quality engine with excellent performance and long service life
- Better sealing effect by using special mechanical seal
- Low fuel consumption

Pump

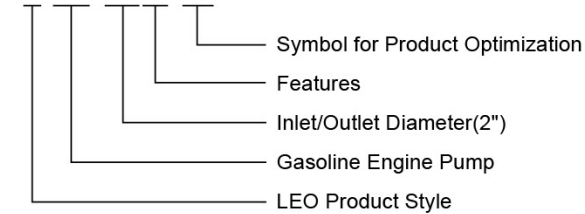
- Anti -rust cast iron pump body
- Aluminum alloy impeller
- Max.Suction: 8 m , Suck 5 m needs 120 s
- Inlet/outlet: 50 mm

Engine

- Single cylinder, 4-stroke, Air-cooled
- Max.power: 6.5 HP
- Rated speed: 3600 rpm
- Reliable engine equipped with low engine oil shut off system

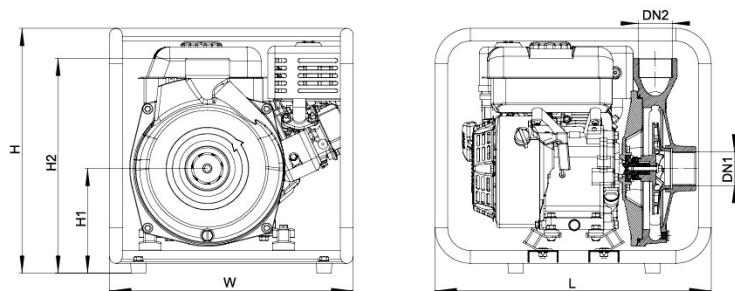
Identification Codes

L GP 20 i - A



Technical Data

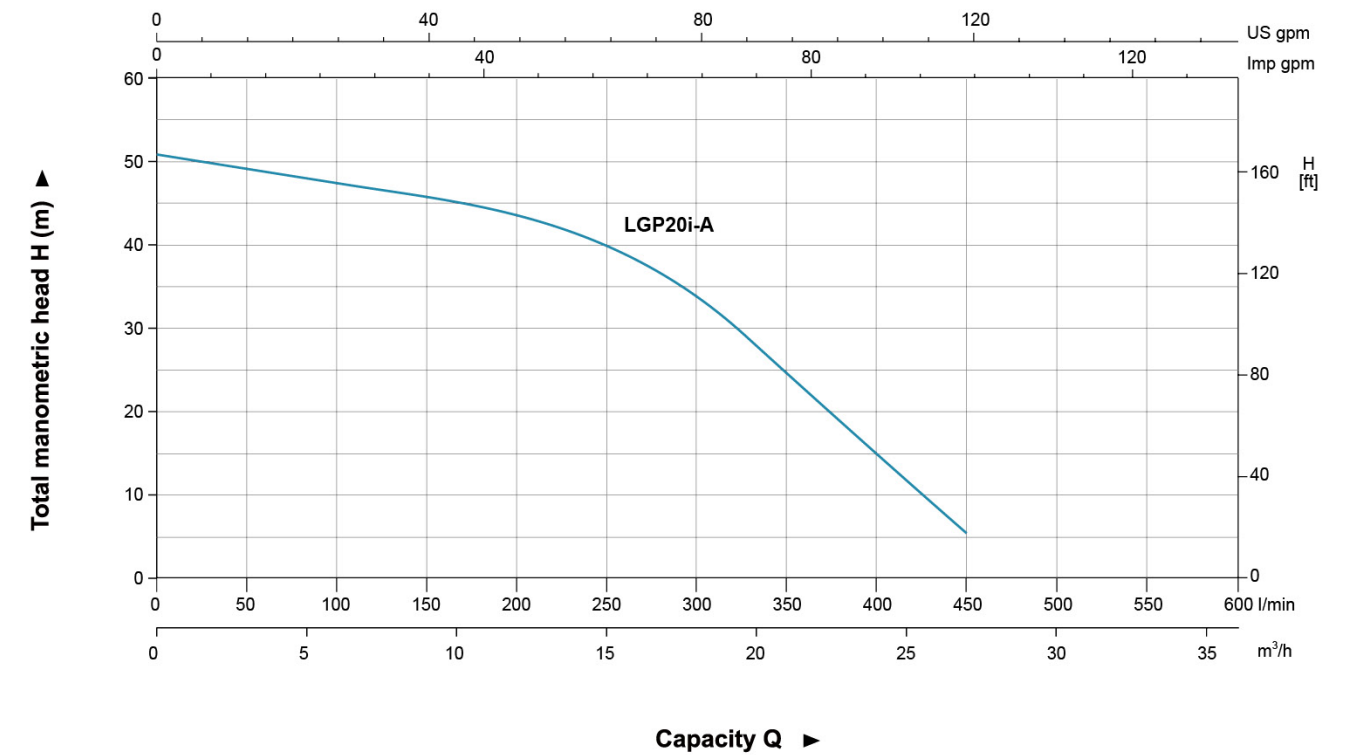
Model	Power	Fuel tank	Engine Oil	Displacement	Engine	Q (m³/h)						
	HP	L	L	cc		0	5	10	15	20	25	
LGP20i-A	6.5	2.8	0.55	196	G200	H (m)	51	48	46	40	28	11.5



Dimension

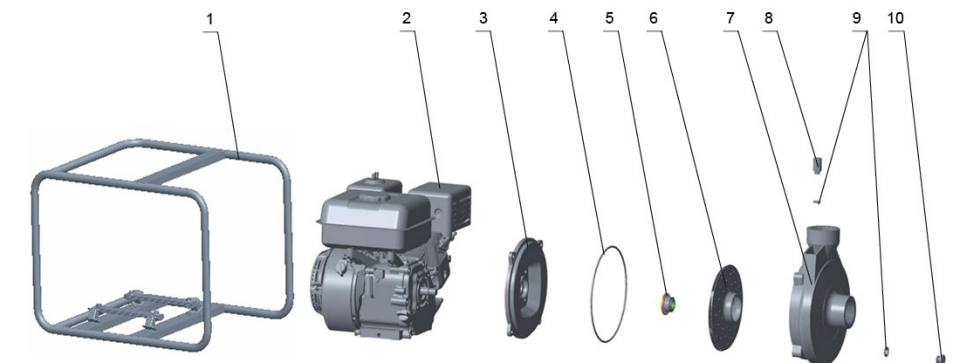
Model	DN1	DN2	L (mm)	W (mm)	H (mm)	H1 (mm)	H2 (mm)
LGP20i-A	2"	2"	476	420	440	180	370

Hydraulic Performance Curves



Materials Table

No.	Part	Material
1	Frame	Steel
2	Engine	
3	Pump cover	HT200
4	O-ring	NBR
5	Mechanical seal	Carbon/Ceramic
6	Impeller	Aluminum
7	Pump body	HT200
8	Plug	HPb59-1
9	O-ring	NBR
10	Plug	HPb59-1



Package Information

Model	GW (Kgs)	L (mm)	W (mm)	H (mm)	Quantity (PCS/20 TEU)
LGP20i-A	30	470	433	450	325





Application

- To transfer clean water with liquid temperature between 0°C and 40°C
- Application in water supply and drainage for factories, mines, municipal facilities as well as field irrigation, etc.

Features

- All new design with ergonomic feature
- High lift series with LEO high efficient hydraulic system
- Reliable 4-stroke gasoline engine with low fuel consumption and high quality crankshaft
- Portable, durable and compact pump frame
- Durable sealing system with special mechanical seal
- Optional outlet selection

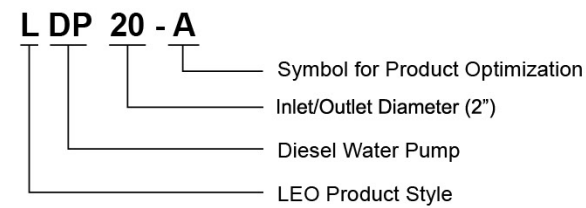
Pump

- Anti-rust cast iron impeller and diffuser
- Max.Suction: 8 m , Suck 5 m needs 120 s
- Inlet/outlet: 2"/3"

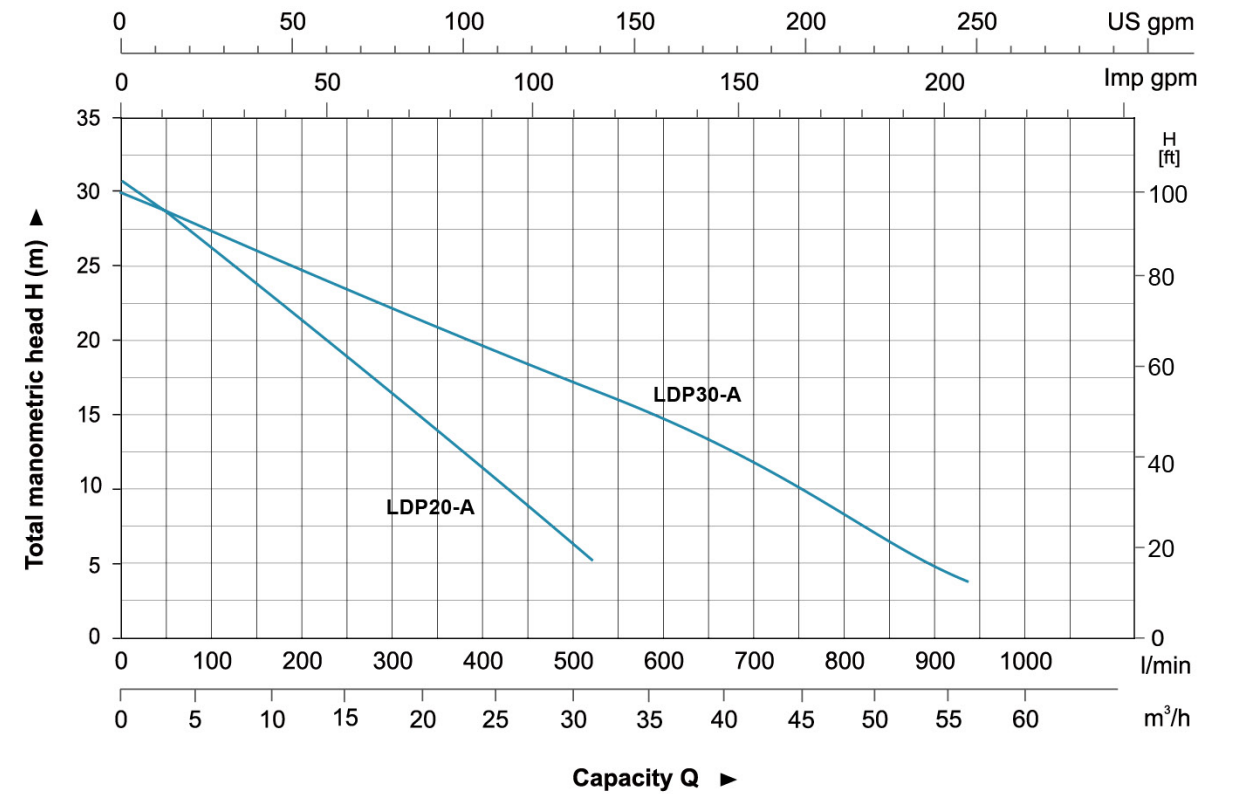
Engine

- Single cylinder,4-stroke,Air-cooled
- Max.power: 3.8 HP
- Rated speed: 3600 rpm
- Reliable engine equipped with low engine oil shut off system

Identification Codes

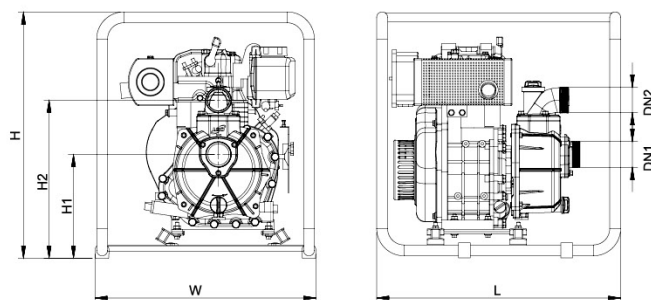


Hydraulic Performance Curves



Technical Data

Model	Power HP	Fuel tank L	Engine Oil L	Displacement cc	Engine D170	Q (m³/h)											
						0	5	10	15	20	25	30	35	40	45	50	55
LDP20-A	3.8	2.5	0.8	219	D170	0	83.3	166.7	250	333.3	416.7	500	583.3	666.7	750	833.3	916.7
LDP30-A	3.8	2.5	0.8	219	D170	30	27	26.5	24.1	21.4	19.3	16.7	15.8	13.5	11	8	4.8

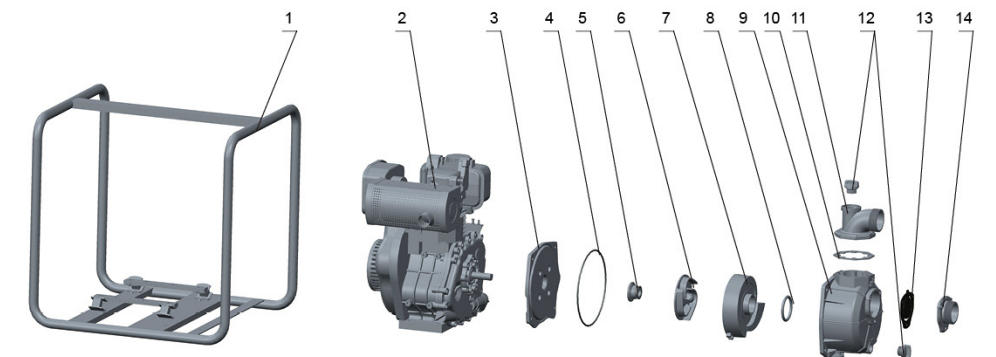


Dimension

Model	DN1	DN2	L (mm)	W (mm)	H (mm)	H1 (mm)	H2 (mm)
LDP20-A	2"	2"	470	427	536	225	335
LDP30-A	3"	3"	470	427	536	240	390

Materials Table

No.	Part	Material
1	Frame	Steel
2	Engine	
3	Pump cover	Aluminum
4	O-ring	NBR
5	Mechanical seal	Carbon/Ceramic
6	Impeller	HT200
7	Diffuser	HT200
8	O-ring	NBR
9	Pump body	Aluminum
10	Seal	NBR
11	Outlet	Aluminum
12	Plug	ABS
13	Non-return valve	NBR
14	Inlet	Aluminum



Package Information

Model	GW (Kgs)	L (mm)	W (mm)	H (mm)	Quantity (PCS/20 TEU)
LDP20-A	35.1	485	435	550	244
LDP30-A	36.2	485	435	550	244



Pump Range



● Peripheral Pump



● Self-Priming Peripheral Pump



● Jet Pump



● Jet Pump for Deep Wells



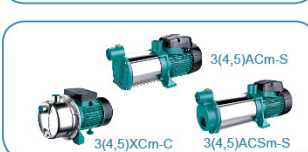
● Centrifugal Pump



● Multistage Centrifugal Pump



● Self-Priming Centrifugal Pump



● Stainless Steel Multistage Centrifugal Pump



● Stainless Steel Centrifugal Pump



● Submersible Pump



● Stainless Steel Submersible Pump



● Stainless Steel Submersible Sewage Pump



● Flexible Shaft Pump



● Domestic Lifting Station



● Pool Pump



● Garden Submersible Pump



● Garden Jet Pump



● Pressure Booster System



● Fountain Pump



● Standard Centrifugal Pump



● Submersible Borehole Pump



● Gasoline/Diesel Water Pump



● Booster Pump/Circulation Pump

Pump Range



● Submersible Sewage Pump



● Submersible Sewage Pump



● Submersible Dewatering Pump



● Submersible Slurry Pump



● Stainless Steel Vertical Multistage Pump



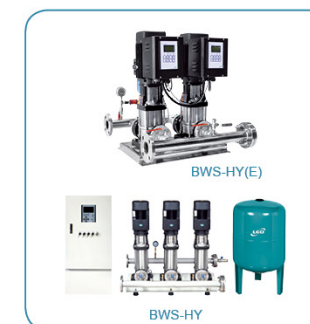
● Stainless Steel Horizontal Multistage Pump



● Semi-open Impeller Stainless Steel Centrifugal Pump



● Stainless Steel Standard Centrifugal Pump



● Pressure Booster System



● Vertical In-line Pump



● Bare Shaft End Suction Centrifugal Pump



● End Suction Centrifugal Pump